



PARTMINER[®]
WORLDWIDE

| *Expert Guidance to Electronic Components*

CAPS[™] Component Data

Research, Analyze, Select

Core Part and Manufacturer Information

Historical Part Information

Datasheets, Documents, Alerts

Replacement Parts

Parametric Data

Life-Cycle Forecast

RoHS/REACH Data

Military Data

CAPS™ Component Data

Research, Analyze, Select

Design Engineers

CAPS is your single, unbiased source for part research and analysis. You can access parametric data, life-cycle forecasts and material data to choose the right components for your design. CAPS can also be easily integrated into your internal databases and systems.

Design Engineers are challenged with designing products that perform specialized functions while behaving in stable and predictable ways. Engineers must find a balance between design, component performance and part costs. Engineers also require current technical information that can be integrated into the Computer Aided Design (CAD) and Product Life-Cycle Management (PLM) processes. Considerations include the spacing and placement of individual parts to allow for size constraints, heat requirements, noise thresholds, end-of-life replacement and component costs. CAPS tools and services offer these solutions to design engineers' challenges:

- Locating objective, unbiased component information on over 150 million parts.
- Choosing the highest performing, quality components that meet the product design requirements at the best price points.
- Conducting parametric search capabilities to locate appropriate parts based on technical requirements.
- Researching and analyzing in-depth current and historical technical component data via datasheets.
- Comparing component alternatives with detailed side-by-side comparison reports.
- Viewing data-driven life-cycle data.
- Compiling data to support the creation of design libraries.

Component Engineers

CAPS is your best source for identifying specific components based on engineering's "generic" specifications. You can easily find substitute and replacement parts for obsolete parts or parts that are in short supply.

Component Engineers must select specific components, based on Design Engineering's "generic" specification (e.g. 16 MB RAM chip). They must also identify and validate replacement parts for obsolete or shortage components. CAPS provides an easy access point to current, unbiased data to expedite and simplify these responsibilities:

- Maintain up-to-date information on your Approved Vendor List (AVL) by having access to objective, unbiased component information on over 150 million parts.
- Meet your designers' specs and internal preferred parts lists through CAPS parametric search functions to locate current orderable parts.
- Lower manufacturing costs and broaden supply chain availability using the industry's leading part cross-reference tools to identify alternate manufacturers, part numbers and component price points.
- Quickly qualify component alternatives utilizing detailed side-by-side comparison reports.
- Update corporate component libraries with detailed parametric information.
- Reliably capture critical part change notices with BOM Alert capabilities.

CAPS™ Component Data

Research, Analyze, Select

CAPS™ is the world's largest, vendor-neutral, source for identifying specific electronic components for research and analysis.

In the world of electronic components, engineers need exact information, not approximations. PartMiner's content engineers are continuously updating and verifying the contents of the CAPS database. You can rest assured that the data is *Current, Complete and Relevant*.

CAPS™ (Computer Assisted Product Selection)

includes detailed information on more than 1,800 active manufacturers and historical data on more than 3,000 manufacturers. The CAPS database is simply the best source in the industry for information on current and historical component manufacturers.

With CAPS you can:

- Cleanse and data-scrub your company's BOMs (Bill of Materials)
- Manage component obsolescence
- Ensure compliance to environmental regulations
- Research a component for a new design
- Cross-reference a component for an alternate source

CAPS includes information on semiconductors, passives, connectors (including radio frequency and military specification cylindricals), electromechanical components, crystals/oscillators, power supplies, relays, transformers, fuses and other circuit protection devices, heat sinks, batteries, and fans and blowers.

CAPS allows access to:

- Over 150 million physical devices
- 50 years of current and historical information
- High-integrity data managed by component engineers
- Easy, web access with direct supplier feeds
- Off-the-shelf and custom desktop access solutions
- Intuitive tools for integration into OEM processes and applications

BOM / AVL Cleansing and Data Scrubbing

Part Number	Manufacturer	Description	Status	Validation_MfrStatus
11-0867-93	TEXAS INSTRUMENTS	CLCOSC GATE/HEX INVERTER STD-TTL SOP14PRL PLASTIC	Possible	ACTIVE
11-0867-39	SIEMENS	BR152-020V	Possible	DISCONTINUED
11-0867-42	MOTOROLA	MPC8525A C,111 OUTPUT QFP 32PRL PLASTIC	Possible	DISCONTINUED

BOM / AVL Cleansing and Data Scrubbing is a critical prerequisite to having the most complete analysis and decision support data available. "Garbage-in – Garbage-out" inefficiencies due to duplicate and incorrect part numbers are very costly. CAPS normalizes data to correct and update part numbers and other critical BOM details, reducing costly inefficiencies due to duplicate and incorrect part numbers.

CAPS™ Component Data

Core Part & Manufacturer Information

Parametric Data

RoHS/REACH Data

Replacement Parts

Military Data

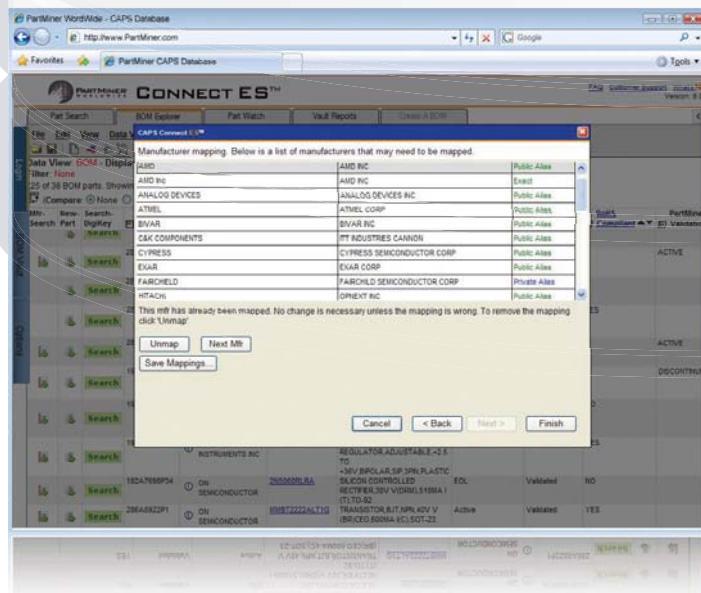
Sourcing Information

Life-Cycle Forecasts

Datasheets | Documents | Alerts

Historical Part Information

Manufacturer Name Cleansing



Robust manufacturer alias table assists with correcting typos and duplicate names due to mergers and acquisitions.

Side-by-Side Comparison



Environmental compliance is one of the top issues facing electronics manufacturers. Side-by-side comparisons provide easy component analysis. With automated Excel® reporting capabilities, it's simple to run a report on your BOMs for RoHS (Restrictions on Hazardous Materials) and REACH (Registration Evaluation and Authorization of Chemicals) compliance.

CAPS™ Component Data

Research, Analyze, Select

Overall ROI

CAPS™ helps save time and costs on:

- Component Selection
- BOM Management and Cleansing
- Environmental Compliance
- Levaged Parts Purchasing
- Duplicate Parts Elimination
- Obsolescence Management

“PartMiner CAPS Expert has significantly helped our design engineers search for new components with acceptable life-cycle status. It has also aided our purchasing agents in finding more stock of aftermarket components.”

“PartMiner CAPS Connect allows component engineering to view all part changes, especially life-cycle status updates, in one place. Convenient email notifications of part data changes makes this process very reliable. We will never miss a last time buy date again!”

“The PartMiner CAPS support experts were very helpful in getting me up and running with both tools. The training was so clear and concise that it allowed me to be the trainer for the rest of the users in my company.”

- OEM Component Engineer

Part Number Cleansing

A	B	C	D	E	F	G	H	I	J	K	L	M	N
Matched P/N	Matched MFR	Status	Risk Factor	LifeCycle	LTR	Last Ship Date	RuHS	REACH	Low Halogen	MSL	Peak Temp	Source	YEOL Range
2	MAX9618MBT-120ED	Maxim Integrated Products Inc	DISCONTINUED	Obsolescence	11/16/2009	09/16/2010	YES	YES	YES	3	200	MULTIPLE	0.0
3	MAX4258EUA1T	Maxim Integrated Products Inc	DISCONTINUED	Obsolescence	11/16/2009	09/16/2010	YES	YES	YES	1	200	MULTIPLE	0.0-1.2
4	MAX4258EUA1T	Maxim Integrated Products Inc	DISCONTINUED	Obsolescence	11/16/2009	09/16/2010	YES	YES	YES	1	200	MULTIPLE	0.0-1.2
5	MAX4258EUA1T	Maxim Integrated Products Inc	DISCONTINUED	Obsolescence	11/16/2009	09/16/2010	YES	YES	YES	1	200	MULTIPLE	0.0-1.2
6	MAX4258EUA1T	Maxim Integrated Products Inc	DISCONTINUED	Obsolescence	11/16/2009	09/16/2010	YES	YES	YES	1	200	MULTIPLE	0.0-1.2
7	MAX4258EUA1T	Maxim Integrated Products Inc	DISCONTINUED	Obsolescence	11/16/2009	09/16/2010	YES	YES	YES	1	200	MULTIPLE	0.0-1.2
8	MAX4258EUA1T	Maxim Integrated Products Inc	DISCONTINUED	Obsolescence	11/16/2009	09/16/2010	YES	YES	YES	1	200	MULTIPLE	0.0-1.2
9	MAX4258EUA1T	Maxim Integrated Products Inc	DISCONTINUED	Obsolescence	11/16/2009	09/16/2010	YES	YES	YES	1	200	MULTIPLE	0.0-1.2
10	MAX4258EUA1T	Maxim Integrated Products Inc	DISCONTINUED	Obsolescence	11/16/2009	09/16/2010	YES	YES	YES	1	200	MULTIPLE	0.0-1.2
11	MAX4258EUA1T	Maxim Integrated Products Inc	DISCONTINUED	Obsolescence	11/16/2009	09/16/2010	YES	YES	YES	1	200	MULTIPLE	0.0-1.2
12	MAX4258EUA1T	Maxim Integrated Products Inc	DISCONTINUED	Obsolescence	11/16/2009	09/16/2010	YES	YES	YES	1	200	MULTIPLE	0.0-1.2
13	MAX4258EUA1T	Maxim Integrated Products Inc	DISCONTINUED	Obsolescence	11/16/2009	09/16/2010	YES	YES	YES	1	200	MULTIPLE	0.0-1.2
14	MAX4258EUA1T	Maxim Integrated Products Inc	DISCONTINUED	Obsolescence	11/16/2009	09/16/2010	YES	YES	YES	1	200	MULTIPLE	0.0-1.2
15	MAX4258EUA1T	Maxim Integrated Products Inc	DISCONTINUED	Obsolescence	11/16/2009	09/16/2010	YES	YES	YES	1	200	MULTIPLE	0.0-1.2
16	MAX4258EUA1T	Maxim Integrated Products Inc	DISCONTINUED	Obsolescence	11/16/2009	09/16/2010	YES	YES	YES	1	200	MULTIPLE	0.0-1.2
17	MAX4258EUA1T	Maxim Integrated Products Inc	DISCONTINUED	Obsolescence	11/16/2009	09/16/2010	YES	YES	YES	1	200	MULTIPLE	0.0-1.2
18	MAX4258EUA1T	Maxim Integrated Products Inc	DISCONTINUED	Obsolescence	11/16/2009	09/16/2010	YES	YES	YES	1	200	MULTIPLE	0.0-1.2
19	MAX4258EUA1T	Maxim Integrated Products Inc	DISCONTINUED	Obsolescence	11/16/2009	09/16/2010	YES	YES	YES	1	200	MULTIPLE	0.0-1.2
20	MAX4258EUA1T	Maxim Integrated Products Inc	DISCONTINUED	Obsolescence	11/16/2009	09/16/2010	YES	YES	YES	1	200	MULTIPLE	0.0-1.2
21	MAX4258EUA1T	Maxim Integrated Products Inc	DISCONTINUED	Obsolescence	11/16/2009	09/16/2010	YES	YES	YES	1	200	MULTIPLE	0.0-1.2
22	MAX4258EUA1T	Maxim Integrated Products Inc	DISCONTINUED	Obsolescence	11/16/2009	09/16/2010	YES	YES	YES	1	200	MULTIPLE	0.0-1.2
23	MAX4258EUA1T	Maxim Integrated Products Inc	DISCONTINUED	Obsolescence	11/16/2009	09/16/2010	YES	YES	YES	1	200	MULTIPLE	0.0-1.2
24	MAX4258EUA1T	Maxim Integrated Products Inc	DISCONTINUED	Obsolescence	11/16/2009	09/16/2010	YES	YES	YES	1	200	MULTIPLE	0.0-1.2
25	MAX4258EUA1T	Maxim Integrated Products Inc	DISCONTINUED	Obsolescence	11/16/2009	09/16/2010	YES	YES	YES	1	200	MULTIPLE	0.0-1.2
26	MAX4258EUA1T	Maxim Integrated Products Inc	DISCONTINUED	Obsolescence	11/16/2009	09/16/2010	YES	YES	YES	1	200	MULTIPLE	0.0-1.2
27	MAX4258EUA1T	Maxim Integrated Products Inc	DISCONTINUED	Obsolescence	11/16/2009	09/16/2010	YES	YES	YES	1	200	MULTIPLE	0.0-1.2
28	MAX4258EUA1T	Maxim Integrated Products Inc	DISCONTINUED	Obsolescence	11/16/2009	09/16/2010	YES	YES	YES	1	200	MULTIPLE	0.0-1.2
29	MAX4258EUA1T	Maxim Integrated Products Inc	DISCONTINUED	Obsolescence	11/16/2009	09/16/2010	YES	YES	YES	1	200	MULTIPLE	0.0-1.2
30	MAX4258EUA1T	Maxim Integrated Products Inc	DISCONTINUED	Obsolescence	11/16/2009	09/16/2010	YES	YES	YES	1	200	MULTIPLE	0.0-1.2
31	MAX4258EUA1T	Maxim Integrated Products Inc	DISCONTINUED	Obsolescence	11/16/2009	09/16/2010	YES	YES	YES	1	200	MULTIPLE	0.0-1.2
32	MAX4258EUA1T	Maxim Integrated Products Inc	DISCONTINUED	Obsolescence	11/16/2009	09/16/2010	YES	YES	YES	1	200	MULTIPLE	0.0-1.2
33	MAX4258EUA1T	Maxim Integrated Products Inc	DISCONTINUED	Obsolescence	11/16/2009	09/16/2010	YES	YES	YES	1	200	MULTIPLE	0.0-1.2
34	MAX4258EUA1T	Maxim Integrated Products Inc	DISCONTINUED	Obsolescence	11/16/2009	09/16/2010	YES	YES	YES	1	200	MULTIPLE	0.0-1.2
35	MAX4258EUA1T	Maxim Integrated Products Inc	DISCONTINUED	Obsolescence	11/16/2009	09/16/2010	YES	YES	YES	1	200	MULTIPLE	0.0-1.2
36	MAX4258EUA1T	Maxim Integrated Products Inc	DISCONTINUED	Obsolescence	11/16/2009	09/16/2010	YES	YES	YES	1	200	MULTIPLE	0.0-1.2
37	MAX4258EUA1T	Maxim Integrated Products Inc	DISCONTINUED	Obsolescence	11/16/2009	09/16/2010	YES	YES	YES	1	200	MULTIPLE	0.0-1.2
38	MAX4258EUA1T	Maxim Integrated Products Inc	DISCONTINUED	Obsolescence	11/16/2009	09/16/2010	YES	YES	YES	1	200	MULTIPLE	0.0-1.2
39	MAX4258EUA1T	Maxim Integrated Products Inc	DISCONTINUED	Obsolescence	11/16/2009	09/16/2010	YES	YES	YES	1	200	MULTIPLE	0.0-1.2
40	MAX4258EUA1T	Maxim Integrated Products Inc	DISCONTINUED	Obsolescence	11/16/2009	09/16/2010	YES	YES	YES	1	200	MULTIPLE	0.0-1.2
41	MAX4258EUA1T	Maxim Integrated Products Inc	DISCONTINUED	Obsolescence	11/16/2009	09/16/2010	YES	YES	YES	1	200	MULTIPLE	0.0-1.2
42	MAX4258EUA1T	Maxim Integrated Products Inc	DISCONTINUED	Obsolescence	11/16/2009	09/16/2010	YES	YES	YES	1	200	MULTIPLE	0.0-1.2
43	MAX4258EUA1T	Maxim Integrated Products Inc	DISCONTINUED	Obsolescence	11/16/2009	09/16/2010	YES	YES	YES	1	200	MULTIPLE	0.0-1.2
44	MAX4258EUA1T	Maxim Integrated Products Inc	DISCONTINUED	Obsolescence	11/16/2009	09/16/2010	YES	YES	YES	1	200	MULTIPLE	0.0-1.2
45	MAX4258EUA1T	Maxim Integrated Products Inc	DISCONTINUED	Obsolescence	11/16/2009	09/16/2010	YES	YES	YES	1	200	MULTIPLE	0.0-1.2
46	MAX4258EUA1T	Maxim Integrated Products Inc	DISCONTINUED	Obsolescence	11/16/2009	09/16/2010	YES	YES	YES	1	200	MULTIPLE	0.0-1.2
47	MAX4258EUA1T	Maxim Integrated Products Inc	DISCONTINUED	Obsolescence	11/16/2009	09/16/2010	YES	YES	YES	1	200	MULTIPLE	0.0-1.2
48	MAX4258EUA1T	Maxim Integrated Products Inc	DISCONTINUED	Obsolescence	11/16/2009	09/16/2010	YES	YES	YES	1	200	MULTIPLE	0.0-1.2
49	MAX4258EUA1T	Maxim Integrated Products Inc	DISCONTINUED	Obsolescence	11/16/2009	09/16/2010	YES	YES	YES	1	200	MULTIPLE	0.0-1.2
50	MAX4258EUA1T	Maxim Integrated Products Inc	DISCONTINUED	Obsolescence	11/16/2009	09/16/2010	YES	YES	YES	1	200	MULTIPLE	0.0-1.2

Both the CAPS database and manufacturer websites are searched to find valid part numbers for non-procurable part numbers.

Predictive End of Life

Mfr	Mfr	Mfr	Mfr	Mfr	Mfr	Mfr	Mfr	Mfr	Mfr	Mfr	Mfr	Mfr	Mfr
1	2	3	4	5	6	7	8	9	10	11	12	13	14
1	MAX4258EUA1T	Maxim Integrated Products Inc	DISCONTINUED	Obsolescence	11/16/2009	09/16/2010	YES	YES	YES	1	200	MULTIPLE	0.0
2	MAX4258EUA1T	Maxim Integrated Products Inc	DISCONTINUED	Obsolescence	11/16/2009	09/16/2010	YES	YES	YES	1	200	MULTIPLE	0.0-1.2
3	MAX4258EUA1T	Maxim Integrated Products Inc	DISCONTINUED	Obsolescence	11/16/2009	09/16/2010	YES	YES	YES	1	200	MULTIPLE	0.0-1.2
4	MAX4258EUA1T	Maxim Integrated Products Inc	DISCONTINUED	Obsolescence	11/16/2009	09/16/2010	YES	YES	YES	1	200	MULTIPLE	0.0-1.2
5	MAX4258EUA1T	Maxim Integrated Products Inc	DISCONTINUED	Obsolescence	11/16/2009	09/16/2010	YES	YES	YES	1	200	MULTIPLE	0.0-1.2
6	MAX4258EUA1T	Maxim Integrated Products Inc	DISCONTINUED	Obsolescence	11/16/2009	09/16/2010	YES	YES	YES	1	200	MULTIPLE	0.0-1.2
7	MAX4258EUA1T	Maxim Integrated Products Inc	DISCONTINUED	Obsolescence	11/16/2009	09/16/2010	YES	YES	YES	1	200	MULTIPLE	0.0-1.2
8	MAX4258EUA1T	Maxim Integrated Products Inc	DISCONTINUED	Obsolescence	11/16/2009	09/16/2010	YES	YES	YES	1	200	MULTIPLE	0.0-1.2
9	MAX4258EUA1T	Maxim Integrated Products Inc	DISCONTINUED	Obsolescence	11/16/2009	09/16/2010	YES	YES	YES	1	200	MULTIPLE	0.0-1.2
10	MAX4258EUA1T	Maxim Integrated Products Inc	DISCONTINUED	Obsolescence	11/16/2009	09/16/2010	YES	YES	YES	1	200	MULTIPLE	0.0-1.2
11	MAX4258EUA1T	Maxim Integrated Products Inc	DISCONTINUED	Obsolescence	11/16/2009	09/16/2010	YES	YES	YES	1	200	MULTIPLE	0.0-1.2
12	MAX4258EUA1T	Maxim Integrated Products Inc	DISCONTINUED	Obsolescence	11/16/2009	09/16/2010	YES	YES	YES	1	200	MULTIPLE	0.0-1.2
13	MAX4258EUA1T	Maxim Integrated Products Inc	DISCONTINUED	Obsolescence	11/16/2009	09/16/2010	YES	YES	YES	1	200	MULTIPLE	0.0-1.2
14	MAX4258EUA1T	Maxim Integrated Products Inc	DISCONTINUED	Obsolescence	11/16/2009	09/16/2010	YES	YES	YES	1	200	MULTIPLE	0.0-1.2
15	MAX4258EUA1T	Maxim Integrated Products Inc	DISCONTINUED	Obsolescence	11/16/2009	09/16/2010	YES	YES	YES	1	200	MULTIPLE	0.0-1.2
16	MAX4258EUA1T	Maxim Integrated Products Inc	DISCONTINUED	Obsolescence	11/16/2009	09/16/2010	YES	YES	YES	1	200	MULTIPLE	0.0-1.2
17	MAX4258EUA1T	Maxim Integrated Products Inc	DISCONTINUED	Obsolescence	11/16/2009	09/16/2010	YES	YES	YES	1	200	MULTIPLE	0.0-1.2
18	MAX4258EUA1T	Maxim Integrated Products Inc	DISCONTINUED	Obsolescence	11/16/2009	09/16/2010	YES	YES	YES	1	200	MULTIPLE	0.0-1.2
19	MAX4258EUA1T	Maxim Integrated Products Inc	DISCONTINUED	Obsolescence	11/16/2009	09/16/2010	YES	YES	YES	1	200	MULTIPLE	0.0-1.2
20	MAX4258EUA1T	Maxim Integrated Products Inc	DISCONTINUED	Obsolescence	11/16/2009	09/16/2010	YES	YES	YES	1	200	MULTIPLE	0.0-1.2
21	MAX4258EUA1T	Maxim Integrated Products Inc	DISCONTINUED	Obsolescence	11/16/2009	09/16/2010	YES	YES	YES	1	200	MULTIPLE	0.0-1.2
22	MAX4258EUA1T	Maxim Integrated Products Inc	DISCONTINUED	Obsolescence	11/16/2009	09/16/2010	YES	YES	YES	1	200	MULTIPLE	0.0-1.2
23	MAX4258EUA1T	Maxim Integrated Products Inc	DISCONTINUED	Obsolescence	11/16/2009	09/16/2010	YES	YES	YES	1	200	MULTIPLE	0.0-1.2
24	MAX4258EUA1T	Maxim Integrated Products Inc	DISCONTINUED	Obsolescence	11/16/2009	09/16/2010	YES	YES	YES	1	200	MULTIPLE	0.0-1.2
25	MAX4258EUA1T	Maxim Integrated Products Inc	DISCONTINUED	Obsolescence	11/16/2009	09/16/2010	YES	YES	YES	1	200	MULTIPLE	0.0-1.2
26	MAX4258EUA1T	Maxim Integrated Products Inc	DISCONTINUED	Obsolescence	11/16/2009	09/16/2010	YES	YES					



About Us

PartMiner WorldWide Inc. is uniquely positioned to provide an objective, global perspective of the electronic components marketplace. We vigorously maintain vast amounts of technical information and gather transactional market intelligence throughout the world.

PartMiner's foundation is built on participation in the global marketplace and a disciplined, unbiased approach to content management.

Our expansive information gathering network includes relationships with more than 1,800 active component manufacturers, 15,000 distribution sources and thousands of OEMs.

We are plugged into the industry at every level: from automated data feeds to personal contact. We are "on the ground" in world market centers to acquire valuable knowledge wherever possible. Nearly 350 PartMiner professionals are located in the Americas, Europe and Asia to compile component data information, source market supply and demand, and execute component transactions.

No one covers the world like PartMiner

Corporate Headquarters

Centennial, Colorado
7807 East Peakview Avenue
Suite 400
Centennial, Colorado 80111
P (303) 200-5567
TF (800) 501-8565
F (303) 200-5556
E CAPS@partminer.com

CAPS Sales

UK Subscription/Content Sales
P +44 (0) 20 3239 7518
M +44 (0) 7785 222518
F +44 (0) 8450 826623
E ukcontent@partminer.com

CAPS Sales

France
CAPS Solutions
P +33(0)-1-46-14-87-28
E france@partminer.com

CAPS Technical Support

P 1 (888) 232-0701

Americas

US
New York
California
Florida
Colorado
.....
Mexico
Brazil

Asia

China
Shenzhen
Beijing
Suzhou
Shanghai
Hong Kong
.....
Singapore
India

Europe and Middle East

Germany
United Kingdom
France
Sweden
Denmark
.....
Israel